



EVERYTHING WE DO IS FOR A BETTER FUTURE



[WWW.GRINWOOD.COM](http://WWW.GRINWOOD.COM)

LONGQUANWU ECO-INDUSTRIAL ZONE, MIAOXI, HUZHO, ZHEJIANG, CHINA

TEL: +86-572-2670601    EMAIL: [GW@GRINWOOD.COM](mailto:GW@GRINWOOD.COM)

CATALOGUE 2023





## Company introduction

As a company established in year 2010, we are expanding our business worldwide with the good reputation gained through qualitative products and exceptional service. With customers' trust and support along with Grinwood team's dedicated effort, we keep improving our production line, developing new designed profiles, and enhancing customers' satisfaction.

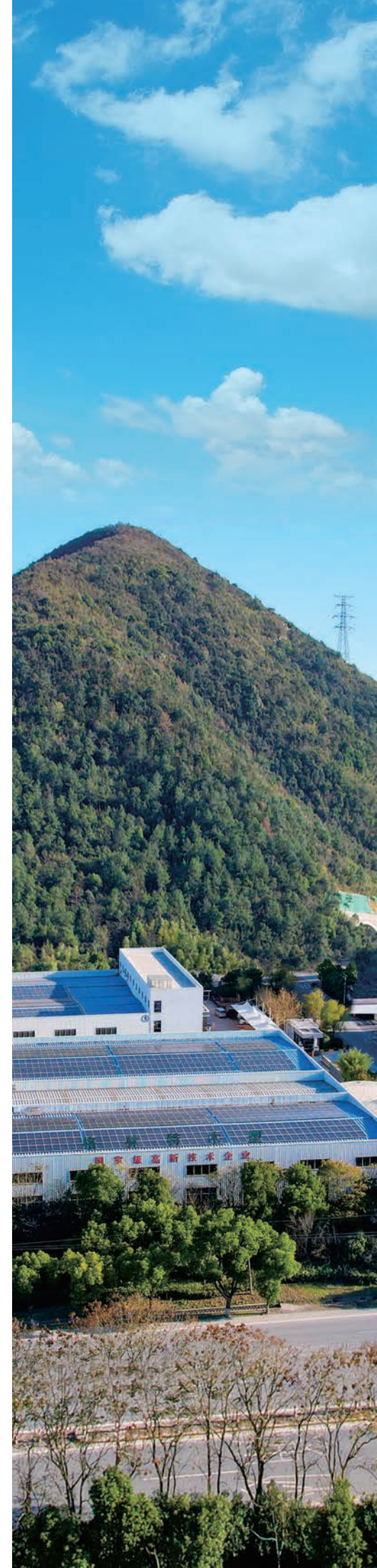
Grinwood WPC is a superior alternative to traditional lumber and plastic products. By introducing advanced extrusion technology, it mixes recycled PE plastics with cellulose fiber and extrudes them into a variety of profiles, including decking, fencing, wall cladding, etc.

Mission statement: To build our business with high quality and dynamic team members who value honesty and great customer satisfaction along with pride in a job well done, and to treat our team members with integrity and respect.

To enhance the environment in which we live, work and to enjoy life through our premium products.

Vision: To be the preferred supplier in terms of production innovation, performance and service. Becoming as an affordable and more desirable solutions to natural products, it will serve to preserve our environment.

Value: Go above and beyond the expectations of customers. Always keep the customers' perspective in mind and listen to their feedback to meet and exceed their expectations.





DECKING

CO-EXTRUSION WPC DECKING

Engineering polymer

60% recycled wood fiber  
40% recycled PE plastic and additives



CO-EXTRUSION, PREMIUM TECHNOLOGY

Co-extrusion WPC decking is a capped wood plastic composite product, which means it has a very thin plastic protection layer to cover the co-extruded core layer. The protection and core layer are extruded together under a very high temperature mold simultaneously.

It retains the advantage of traditional composite products. Meanwhile, with this advanced protection layer, it gives the board better properties than conventional composite decking as below.

-Messes can be easily cleaned up because the liquid never gets absorbed by the protection layer, which makes co-extruded composite decking very easy to clean

-Better resistant to mildew and splitting, so lifespan is longer

-The protection layer ensures its color stays much longer

-wear resistance and scratch resistance of the co-extruded composite decking are better than traditional composite decking



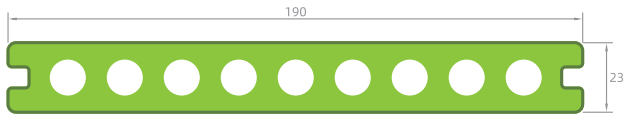
Test Items	Test Method	Test Results	Test requirements
Flexural properties	EN 15534-4: 2014 Sections 4.5.2 EN 15534-1: 2014 Annex A	Bending Strength: 41.0 MPa Modulus of elasticity:3727 MPa Maximum load: Mean: 5407 N Min.: 5174 N Deflection at 500N: Mean: 0.99 mm Max.: 1.12 mm	Flexural properties -F'max: Mean≥3300N Min.≥3000N -Deflection under a load of 500N Mean≤2.0mm Max.≤2.5mm
Moisture resistance under cyclic test conditions	EN 15534-4: 2014 Section 4.5.5 EN 15534-1: 2014 Section 8.3.2	Original bending strength: 41.0 MPa After exposure, Mean bending strength: 40.4 Mpa Decrease: 1.5% Min Bending Strength: 37.1 MPa Decrease: 9.7%	Decrease of bending strength, Means20% Max.≤30%
Swelling and water absorption (28 days immersion)	EN 15534-4: 2014 Section 4.5.5 EN 15534-1: 2014 Section 8.3.1	Mean swelling: 0.40% in thickness 0.10% in width 0.14% in length Max. swelling: 0.58% in thickness 0.15% in width 0.23% in length water absorption: Mean 0.87% Max. 0.90%	Mean swelling: ≤4% in thickness ≤0.8% in width ≤0.4% in length Max. swelling: ≤5% in thickness ≤1.2% in width ≤0.6% in length water absorption: Mean ≤7% Max. ≤9%
Tensile strength-perpendicular to the plane of the board	En319: 1993	Mean: 4.16 N/mm²	



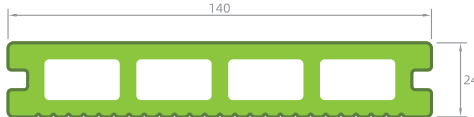
GW901



GW917



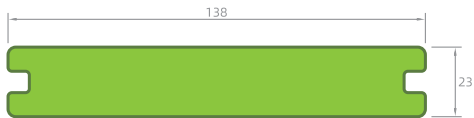
GW922



GW905



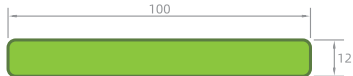
GW902



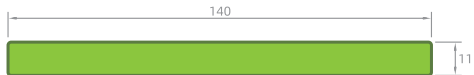
GW916



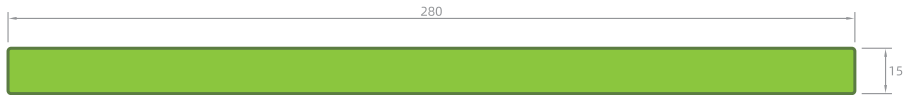
GW903



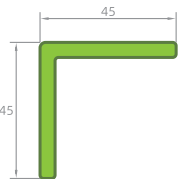
GW909



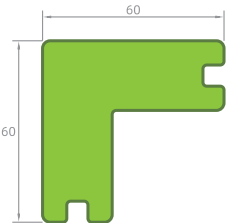
GW928



GW911



GW921



CN003



CN004



CN005



CN006



CN007



CN009



CN014



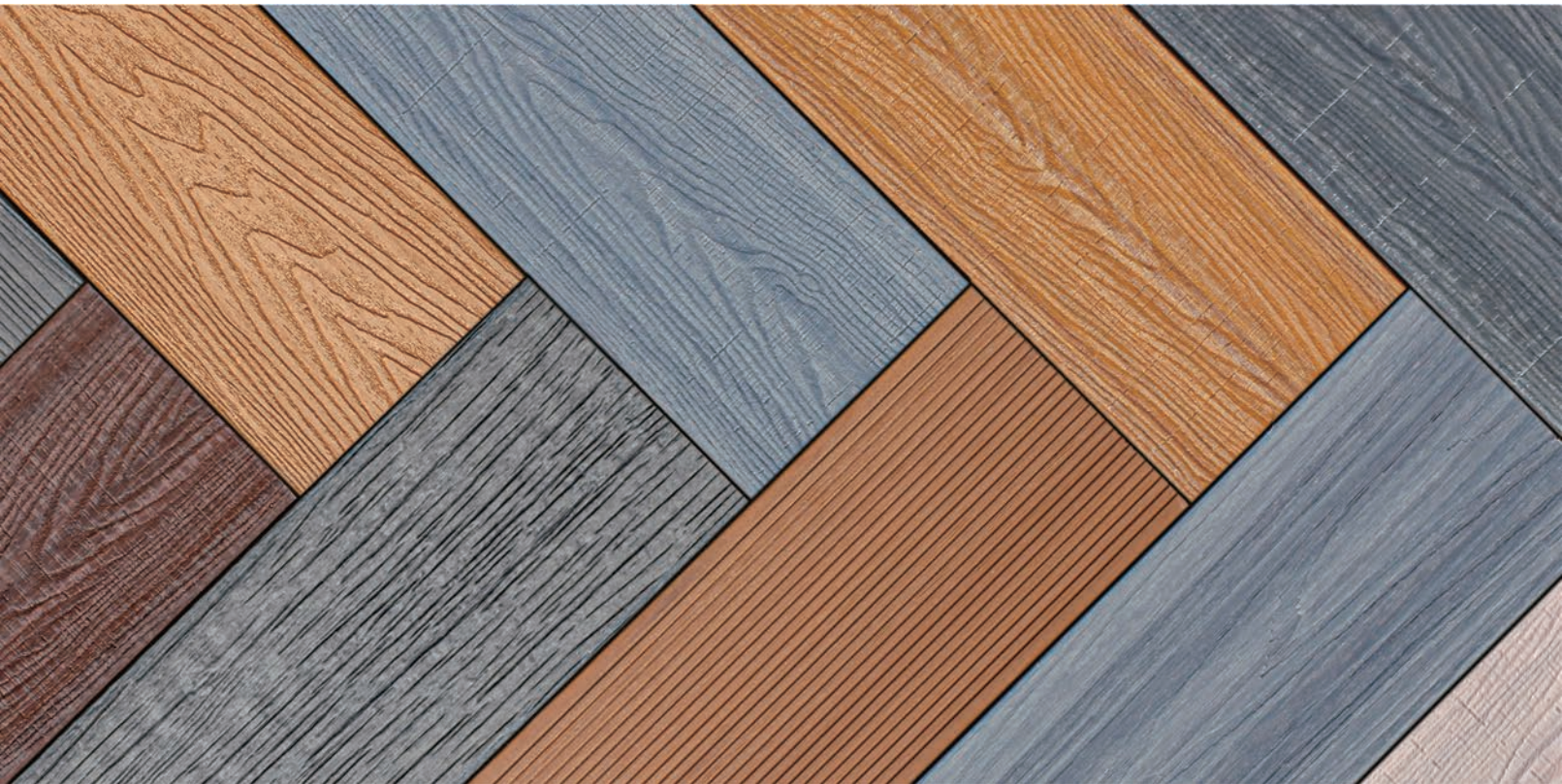
CN016



CN017



CN019





DECKING

3D EMBOSSING WPC DECKING



3D EMBOSSING, NATURAL TEXTURE

Compared to the traditional wood grain decking, 3D embossing decking will have more natural visual effect and more realistic wood grain texture. 3D embossing technique do not need a follow-up treatment, it can finish the embossing procedure during the extrusion process. The wood texture of 3D embossing can bring long-term durability because it is deeper than the normal embossing. The abrasion during application is not so obvious as the normal embossing.

- Better wooden texture than traditional embossing
- The abrasion resistance of 3D embossing is better
- Better slip resistance



Test Items	Test Method	Test Results	Test requirements
Swelling and water absorption	EN 15534-4	0.8%/0.6%/0.8%/0.6%/0.7% 0.1%/0.1%/0.1%/0.1%/0.1% 0.1%/0.1%/0.1%/0.1%/0.1%	Change in thickness: Max. 5%(individual values) Max. 4%(mean value) Change in width: Max. 1.2%(individual values) Max. 0.8% (mean value) Change in length: Max. 0.6% (individual values) Max. 0.4% (mean value)
Flexural properties	EN 15534-4	5915N/6451N/5542N/ 5964N/6517N/5421N/ 5680N/5776N  5908N	Min. 3000N (individual values)  Min. 3300N (arithmetic mean value)
Moisture resistance under cyclic test conditions  -Bending strength before cyclic test conditions (individual values, arithmetic mean value)  -Bending strength after cyclic test conditions (individual values, arithmetic mean value)	EN 15534-4	48.1MPa/52.5MPa/45.1MPa/ 48.5MPa/53.0MPa/44.1MPa/ 46.2MPa/47.0MPa 48.1MPa  44.4MPa/41.0MPa/43.0MPa/ 49.8MPa/44.5MPa/45.0MPa/ 47.1MPa/42.5MPa 44.7MPa	



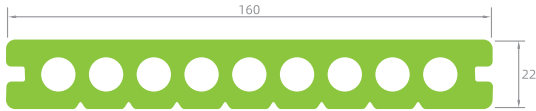


C01 C02 C03 C04 C05 C06



C119 C110 C109 C108 C105 C101

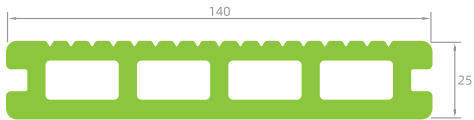
GW802



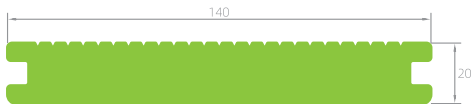
GW803



GW801



GW009







GWA011-3



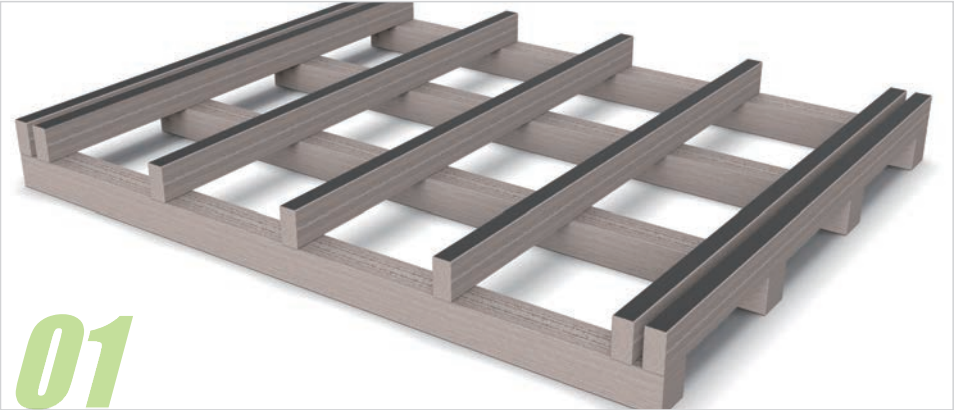
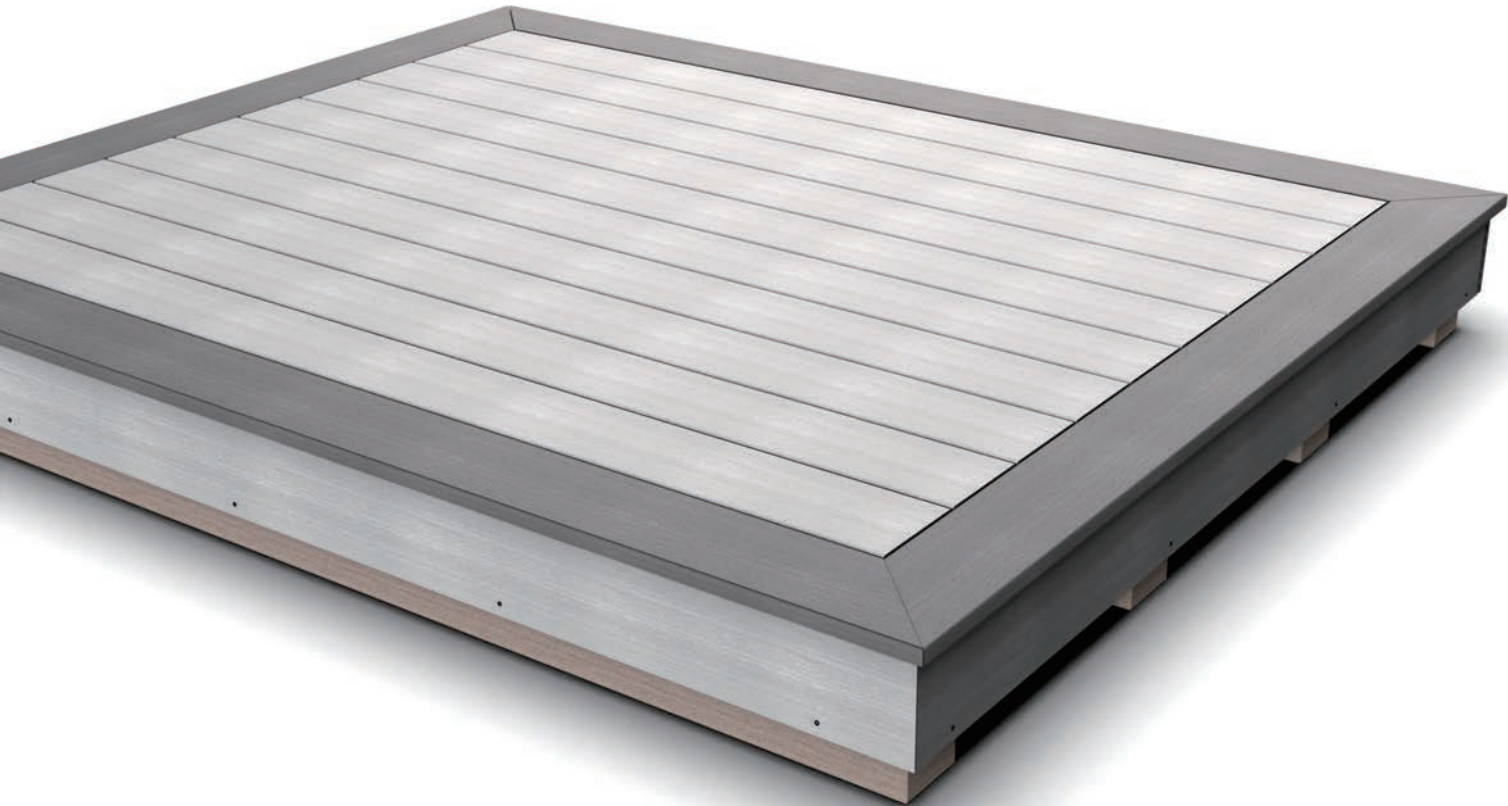
GWA007



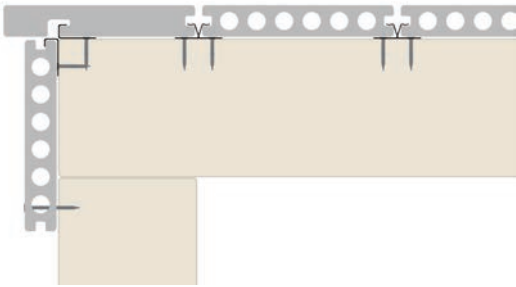
GWA014-3



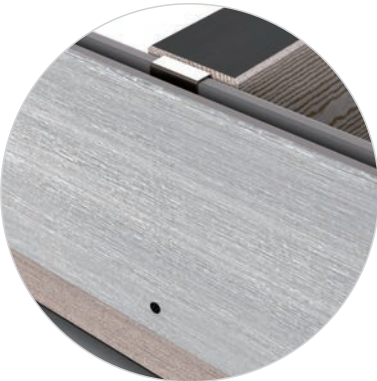
GWA009



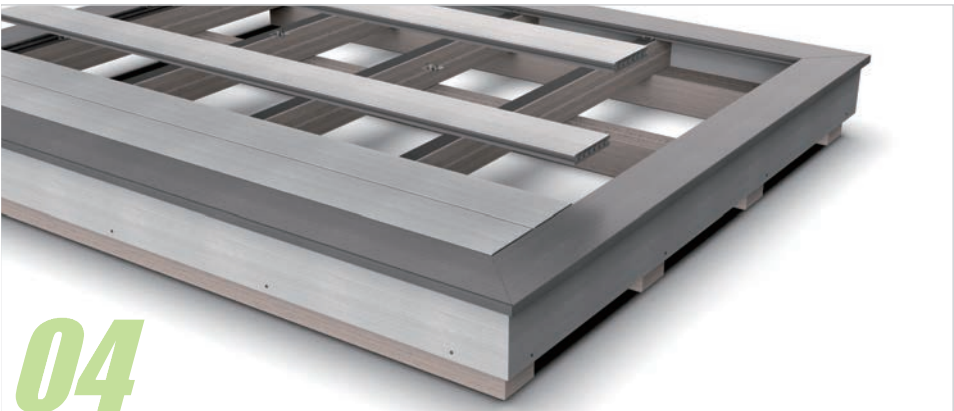
01



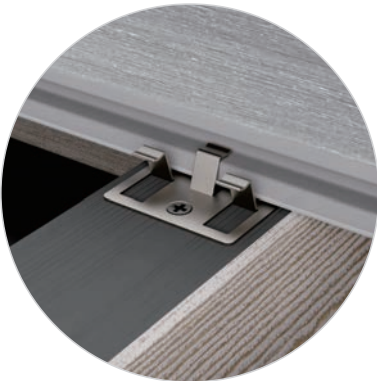
02



03



04





DECKING  
LIGHT



MORE THAN A LIGHT

This LED light is specially designed for our WPC Decking system, which makes your decking system more bright and attractive at night. The color of the light is changeable, which makes the decking system more functional.

Input Voltage	Working Voltage	LED Quantity	Rated Power	Luminous Flux	Optical Angle
AC 100~240V	DC 12V	3 pcs	0.6 W	18 lm	120°



Step:1  
First drill a 3.3cm/1.3 inch hole in the floor



Step:2  
Put the LED floor light into the hole



Step:3  
Connect the led ground light with other led ground lights





FENCING



Wind loading

MODERN STYLE FENCE, ENJOYABLE LIFE

Grinwood fence is designed by applying aluminium part as a structural support and wood plastic composite as fence boards. The metal structure makes the whole design have better wind pressure resistance and the WPC fence boards can fully embody wood-like appearance.

Compared to traditional composite garden fences, it looks more modern and beautiful. And also, because of its easy installation steps, you can even do it by yourselves, which sounds very attractive to many people.

And of course, it owns all the advantage of wood plastic composite products, like more durable and long lasting, low maintenance, termite resistance, etc., which brings you a much easier and colorful lifetime.







Modular elements and very easy to install

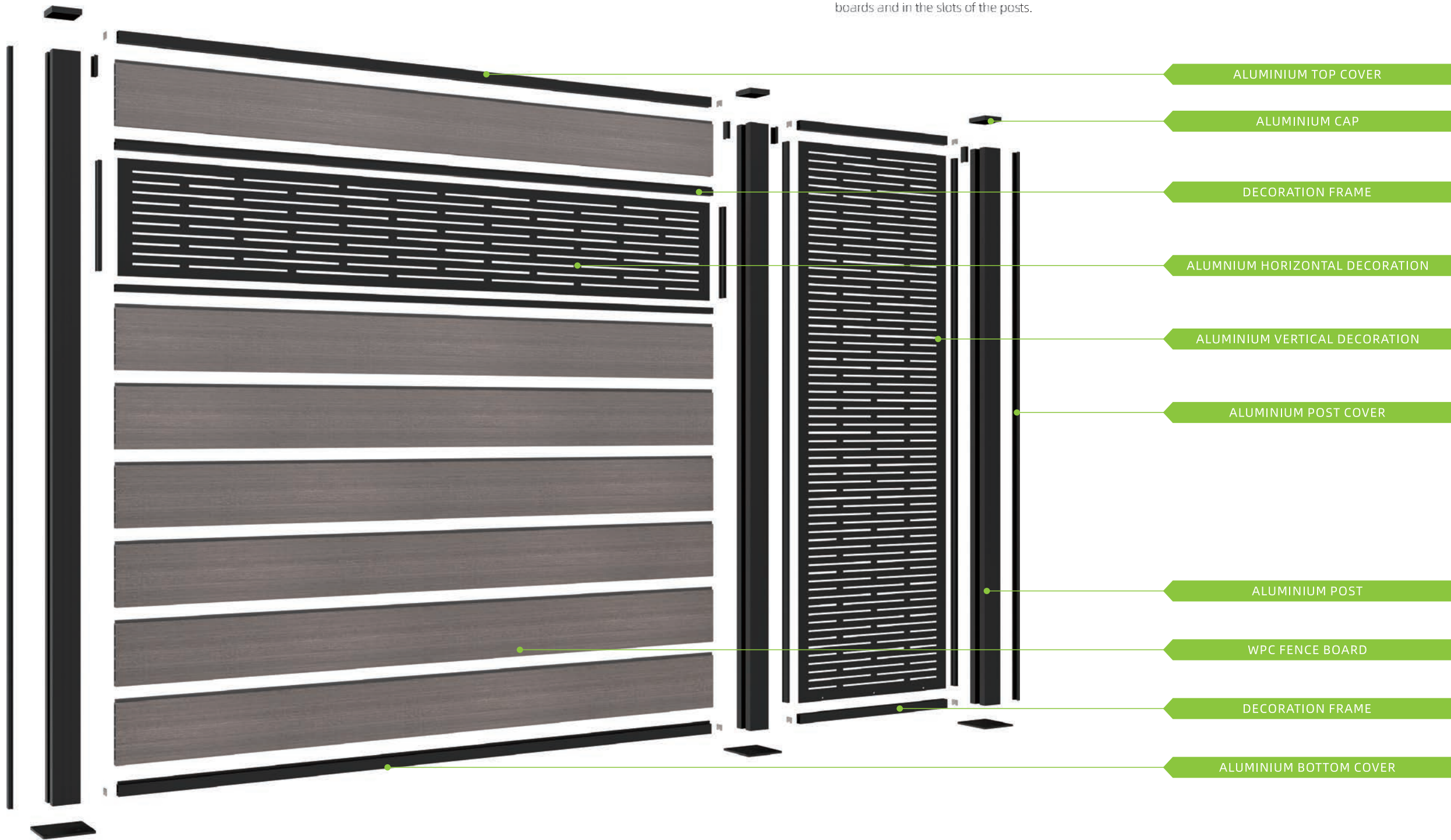
The posts are fixed either on the ground or under ground.

All designs are supplied with all the necessary fencing accessories, which makes the fence very easy to be assembled.

With this patented design, our modern fence system can be assembled very quickly and easily with enough stability. With the idea of privacy fence, you may enjoy your leisure time much more than your can imagine.

By combining with different patterns of aluminium decoration panels, it will make your fence look more unique and vivid.

The decors are offered with a grooved aluminium frame that fits perfectly on the aluminium or composite boards and in the slots of the posts.









## FENCING

## DECOR

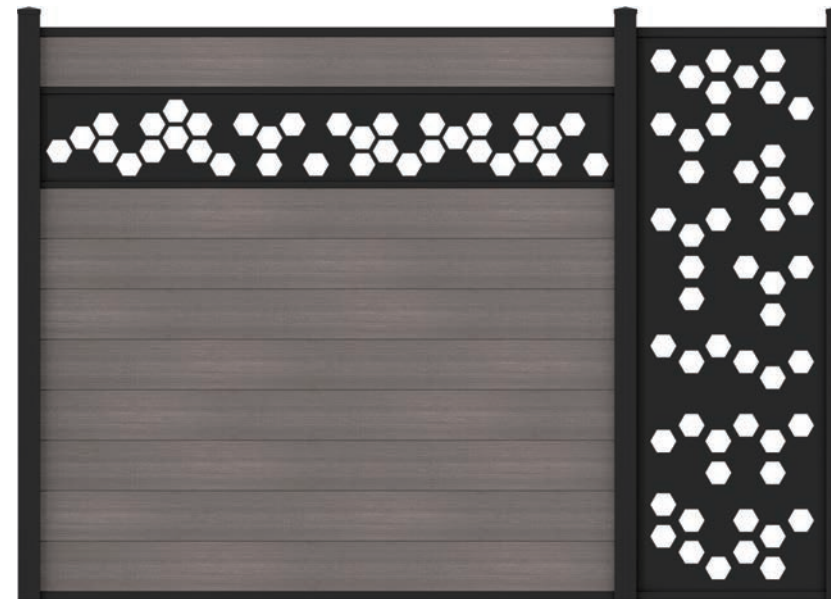


## OPEN

The OPEN decor adds a simple but stylish pattern to the panel while maintaining a good protection for privacy.

It is a pattern that will never be out of date.

2 models available: horizontal and vertical



## HEXAGON

Do you feel it is just like lots of stars in the sky? Nice looking, isn't it? Choose the HEXAGON decors, which can be used vertically or horizontally, between two boards or at the top of the panel.

2 models available: horizontal and vertical



## ARTISTRY

Personalise your fence with the artistry decors, which will bring your fence a unique design and appearance. The decors are delivered with their aluminium frame which is assembled on the aluminium or composite fence boards and in the posts.

2 models available: horizontal and vertical



## BLOSSOM

This blossom design is just available in vertical model. It is just like a great picture in your garden fence, which is vivid and special.

The outdoor frame elements ensure perfect integration and finishing of the panel.





CO-EXTRUSION FENCE BOARD

The latest co-extrusion technology ensures that our composite boards are not only guaranteed against insect and termite attack, but are also more resistant to UV rays.

A thin protection layer all over their surface also makes the board more stain resistant and lower maintenance.



Eco-friendly

Low maintenance

Waterproof

Anti-UV



TRADITIONAL FENCE BOARD

Traditional composite fence boards are made from 60% of recycled wood fiber and 40% of recycled HDPE plastic and additives.

They are naturally resistant to insect and termite attacks and also water proof.



Eco-friendly

Low maintenance

Waterproof

Anti-UV



FENCING

GATES



A PERFECT COMBINATION WITH OUR FENCE

Grinwood's modern fence system allows you to match fences and openings with a wide range of gates.

Standard dimension of our gate is 900x1800mm. They are filled with the same materials as the fence. You can also make your customized dimensions or designs if you like.



gate lock



hinge



structural materials



door frame



door frame cap



decoration bar

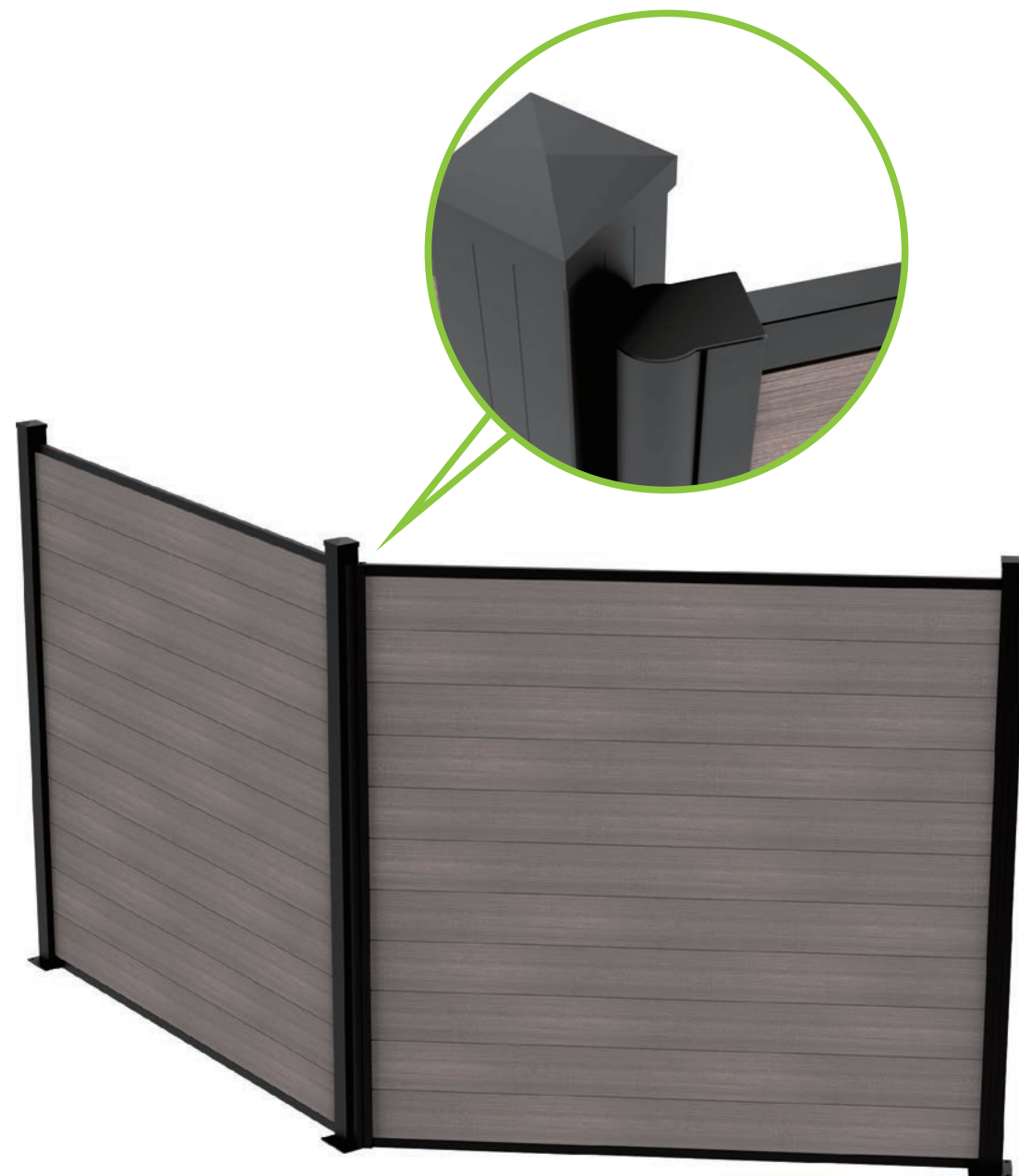


## FENCING

## DIFFERENT ANGLES, DIFFERENT APPLICATIONS

With our standard aluminium fence post, the fence can only be installed in 90 or 180 degrees.

Now with these two creatively designed aluminium spare parts, our fence system can be adjusted to different angles for some specific conditions, which can meet your requirement for different applications.



## NEW IDEAS

## ADJUSTABLE ANGLE POST

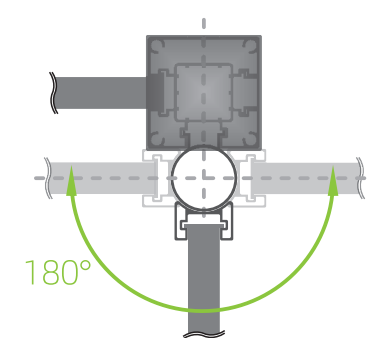
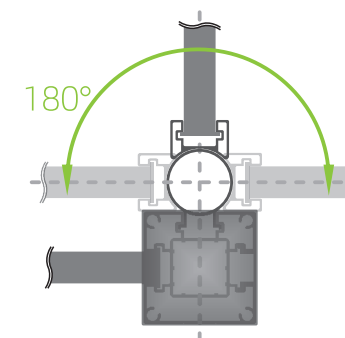
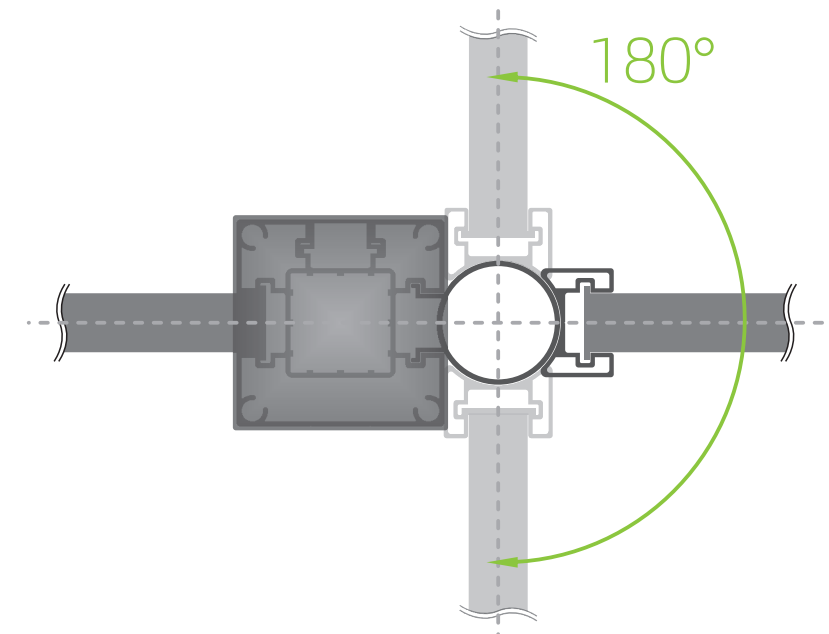
An axis is inserted into the slot of the post, and the pivot slides over it. The pivot will receive the fence board like a normal post. It is possible to achieve the angle up to 360 degrees.



GF009



GF008





FENCING

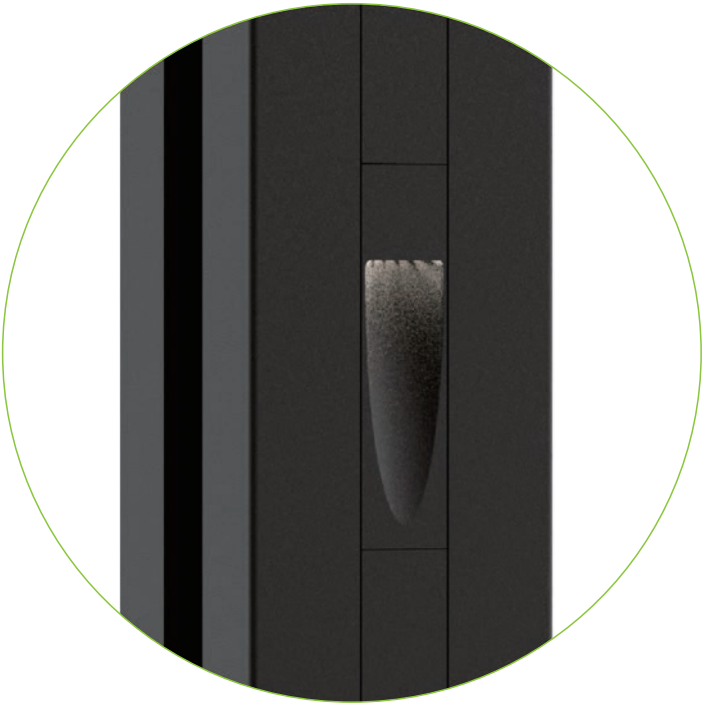
LIGHT



MORE THAN A LIGHT

This backyard LED light is specially designed for our fence post, and it can only be used together with our fence post. It takes much of our effort to design it, which makes our fence system more than functional.

Input Voltage	Working Voltage	LED Quantity	Rated Power	Luminous Flux	Optical Angle
AC 110~240V	DC 24V	2 pcs	2 W	139 lm	20×50°



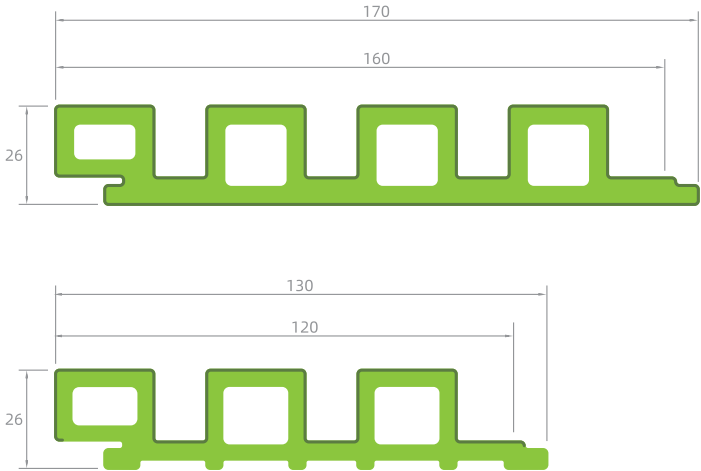


**WALL CLADDING**





WALL CLADDING



THE PERFECT COMBINATION OF AESTHETICS AND PRACTICALITY

Grinwood WPC exterior wall cladding system are designed with imaginative and customer-oriented principle. It is a perfect combination of aesthetics and practicality.





DIFFERENT COLORS, DIFFERENT CHOICES

With a matt finish, the colors of the boards are intense and very wooden-like.  
Each board is unique, the process of manufacturing allows to achieve randomly varied color shades.



CN001



CN003



CN004



CN005



CN006



CN007



CN014



CN024



F-Trim



Outside Corner Trim



Aluminium Inside Trim



Aluminium Outside Trim



Sealing Strip



Aluminium Joist



Aluminium Support Clip

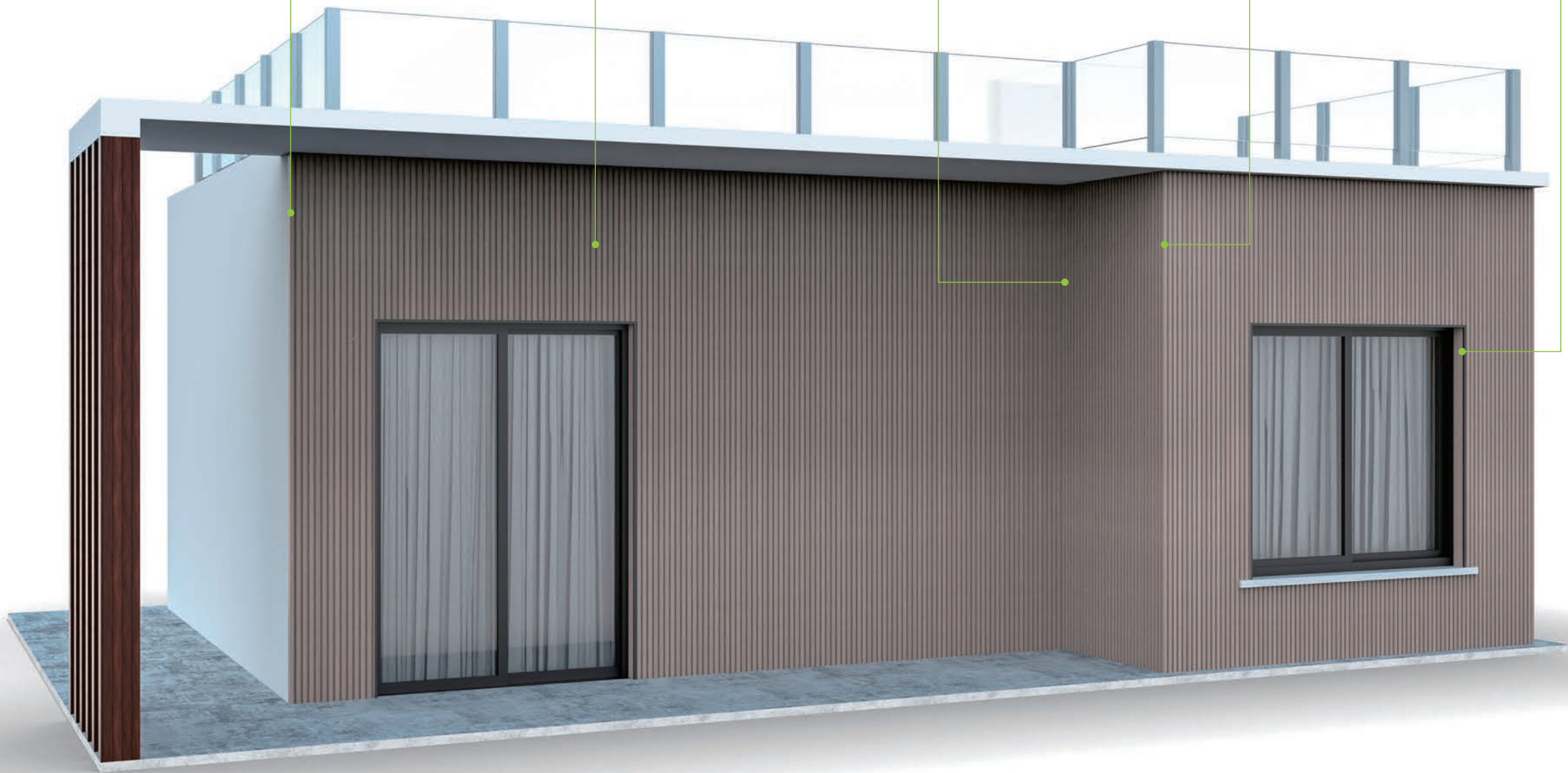
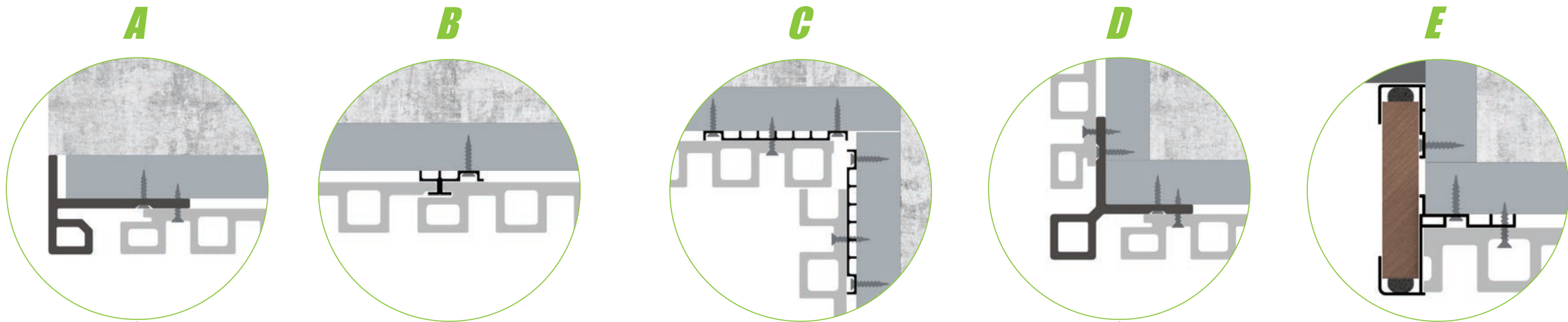


Aluminium Fixing Clip



Installation guide for slatted wall cladding

- A F-Trim, used as the first and last board
- B Aluminium Clip, used at every joist to fix each board to the substructure
- C Aluminium Support Clip, used as the support for the last board on the inner corner
- D Outside Corner Trim, used on the outside corner
- E Aluminium Inside & Outside Trim, used as the covers for the windowsill



\*For detailed installation instructions, please browse the official website or inquire the salesperson.[www.grinwood.com](http://www.grinwood.com)

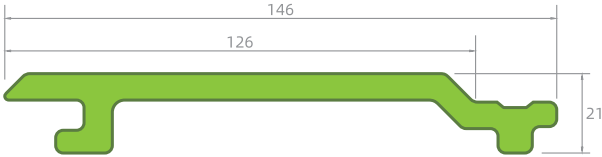


WALL CLADDING



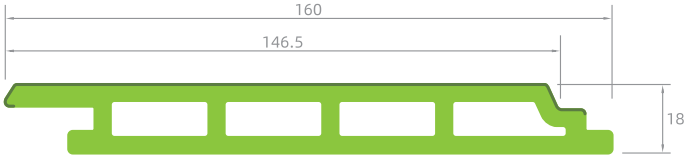
A CONTEMPORARY WPC WALL CLADDING

Grinwood WPC wall cladding, as an ideal choice for the majority of cladding applications, with various of colors and texture available, will definitely add value to your offices, commercial premises, theme parks, any landscape you can think of.



A WPC WALL CLADDING WITH VARIOUS COLORS

Our WPC cladding boards are available in various different colors. They give a unique appearance to your facade. The brushed and matt finish imitates natural wood in the best possible way, but with no hassle like natural wood.







Accessories for wall cladding

Grinwood wpc wall cladding system has various types Aluminium trims for you to choose, which makes the whole system more stable and vivid.



Aluminium H Trim



Aluminium Start/End Trim



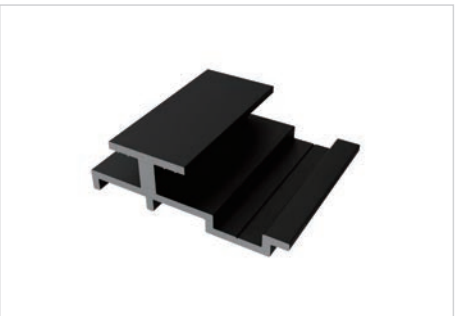
Aluminium Inner Corner Trim



Aluminium Outer Corner Trim



Aluminium Support Clip



Aluminium Fixing Clip



WPC L Trim

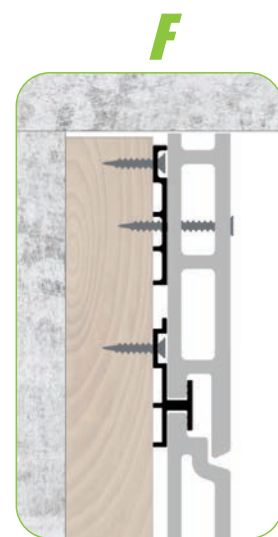
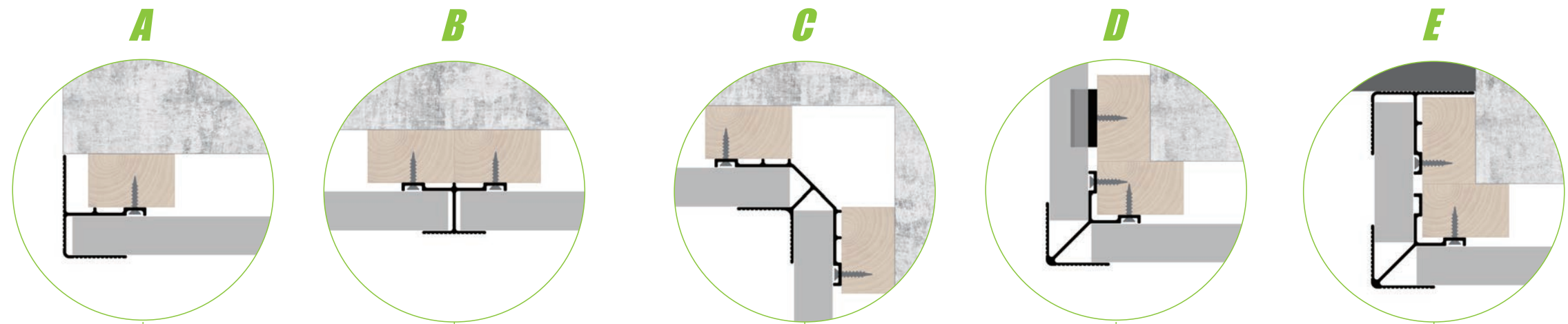


Stainless Steel Screw



## Installation guide for wall cladding

- A** Aluminium Start/End Trim, used for the installation of the first/end board
- B** Aluminium H Trim, used if there is a break between two boards to cover up the gap
- C** Aluminium Inner Corner Trim, used on the inner corner
- D** Aluminium Outer Corner Trim, used on the outer corner
- E** Aluminium End Trim & Outer Corner Trim, used at the windows
- F** Aluminium Fixing Clip, used at every joist to fix each board to the substructure  
Aluminium Support Clip, used as the support for the last board on the inner corner





Surface Pattern Selection

CO-EXTRUSION



wood vein



smooth surface



matt texture



saw mark

3D EMBOSSING



antique



classical



natural



modern